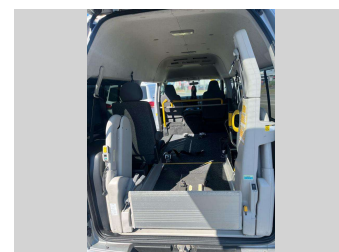
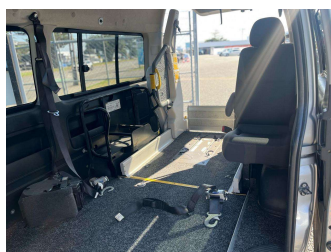
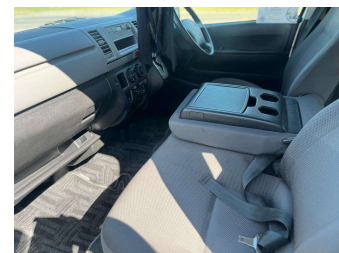
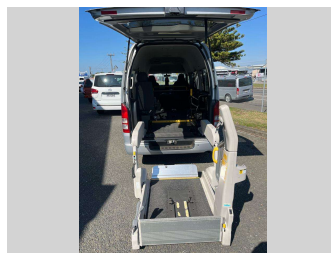



2012 Toyota REGIUS Wheel Chair Van



Purchase Price **\$29,995**
Includes GST, Registration & Licensing

Indicative repayments
\$191.18 per week*
Based on a 208 week term & no deposit.
Total repayments (208) = **\$39,764.98**



Mechanical Warranty Peace of Mind



Top features

- » Air Bag(s)
- » Air Conditioning
- » Car Stereo
- » Central Locking
- » Face Lift Model
- » Rear Wiper
- » Wheel Chair Hoist.

Body Style	4 door, Van	Reg No.	MGP861
Odometer	123,000 km	Ext Colour	White
Engine	2000 cc, Petrol	History	-
Fuel Type	-	Seats	3 seats
Transmission	Auto	CO2 Emissions	-
Wheels	-	Energy Economy	-
VIN	7AT0H63TX19159392		
Interior	Dark Grey, Cloth		
Safety	-		
		Stock ID: 6597	



Craig Hearn Motors | Phone 0800 473 282 | Email
craighearnmotors@outlook.co.nz
32 Pandora Road, Napier 4110, New Zealand
www.craighearnmotors.co.nz

* Craig Hearn Motors is not a lender nor a financial adviser. Any amounts displayed should not be seen as an offer of finance or taken as financial advice. The interest rate, fees and loan term used in this calculation may not actually represent those available from lenders. Actual interest rates, fees and loan terms will vary per lender and are typically based on an assessment of your credit risk and responsible lending criteria. Any repayment amounts displayed are indicative only and have been calculated using several other indicative inputs. The interest rate used in this calculation is an arbitrary 13.95%, however exact interest rates vary per lender. The term of the loan used in this calculation is 208 week. Exact terms available vary per lender although options typically include 6, 12, 18, 24, 36, 48 and 60 months. This calculation also includes two typical mandatory fees charged by lenders. These are an account admin fee of \$1.50 per month (other payment frequencies may be available) and a one-off establishment fee of \$395.00. Typically, this fee can be paid upfront or, as in this calculation, be capitalised over the contract term, ie. included in the loan amount. These fees can vary per lender and other non-mandatory fees and charges may also apply. The total amount of repayments has been calculated by multiplying 208 weekly repayments (based on a 208 week term) by the weekly repayment amount of \$191.18 which equals \$39,764.98. This calculator does not consider any of your own personal circumstances and we strongly suggest you seek budgeting advice prior to committing to any loan contract. Responsible lending criteria and lender terms and conditions will likely apply to any finalised loan contract. Proof of security and/or vehicle insurance may also be required before proceeding.